

SECTION DRAWING

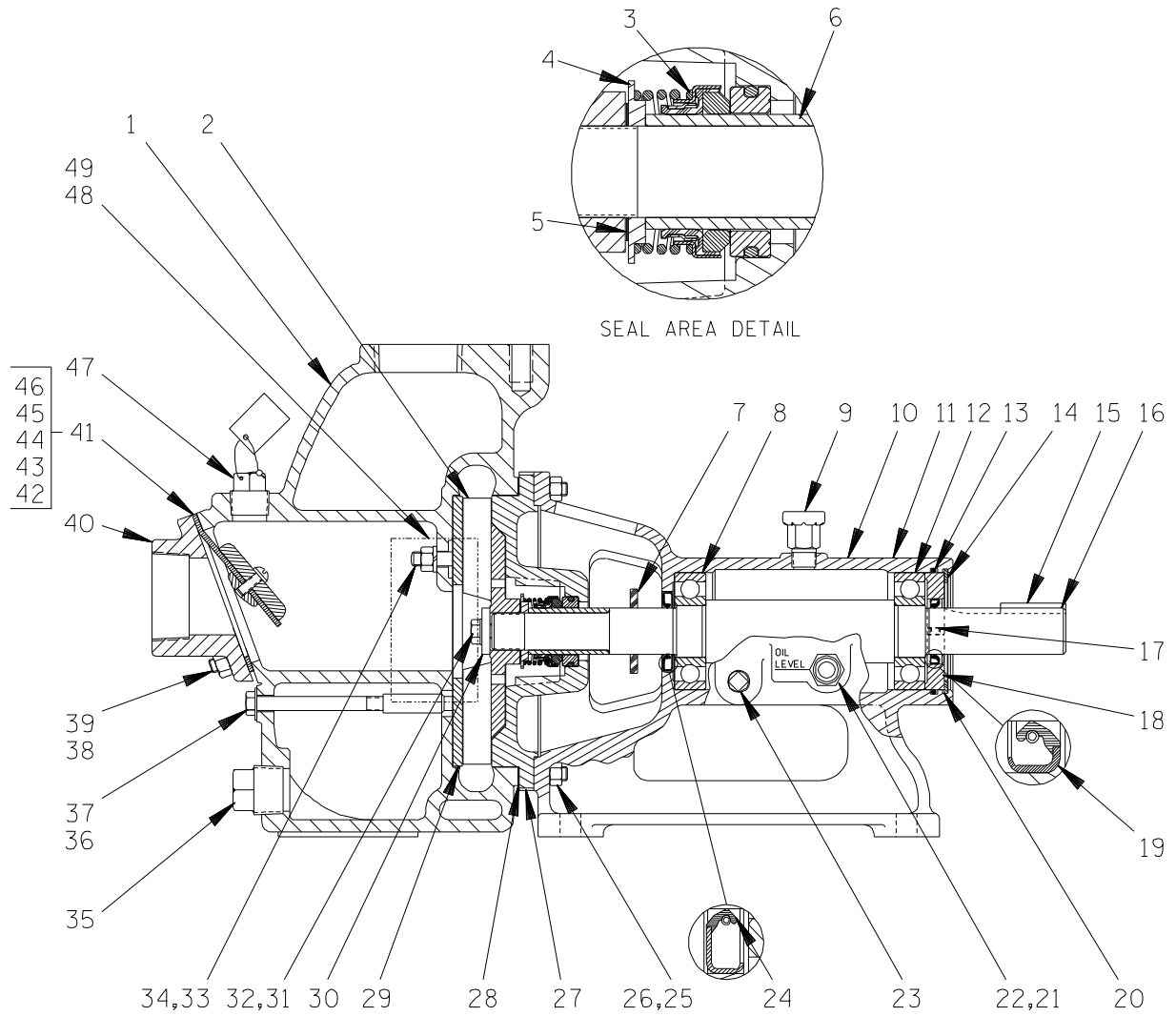


Figure 1. Pump Model 82H52-B

PARTS LIST
Pump Model 82H52-B
 (From S/N 1325648 up)

If your pump serial number is followed by an "N", your pump is **NOT** a standard production model. Contact the Gorman-Rupp Company to verify part numbers.

ITEM NO.	PART NAME	PART NUMBER	MAT'L CODE	QTY	ITEM NO.	PART NAME	PART NUMBER	MAT'L CODE	QTY
1	PUMP CASING	8149	10010	1	33	HEX NUTS	D06	15991	1
2 *	IMPELLER	7947B	10010	1	34	LOCK WASHER	J06	15991	1
3 *	SEAL ASSEMBLY	25285-855	----	1	35	PIPE PLUG	P16	10009	1
4 *	SPRING SEAT	31512-021	1706H	1	36	HEX HD CAP SCREW	B0616	15991	1
5 *	IMP ADJ SHIM SET	2X	17090	1	37 *	FIBER WASHER	KF06	18040	1
6 *	SHAFT SLEEVE	2146L	16000	1	38	STUD	C0606	15991	4
7	SLINGER RING	3272	19120	1	39	HEX NUT	D06	15991	4
8 *	BALL BEARING	23275-008	----	1	40	SUCTION FLANGE	1361	10010	1
9	AIR VENT	S1703	----	1	41	FLAP VALVE ASSY	1361A	----	1
10	PEDESTAL	3114B	10010	1	42 *	-VALVE GASKET	1361G	19070	1
11	ROTATION DECAL	2613M	----	1	43	-LARGE VALVE WEIGHT	19B	10010	1
12 *	BALL BEARING	23275-008	----	1	44	-SMALL VALVE WEIGHT	1354	15160	1
13 *	O-RING	25152-235	----	1	45	-RD HD MACH SCREW	X0403	17090	1
14	RETAINING RING	S247	----	1	46	-LOCK WASHER	J04	17090	1
15 *	SHAFT KEY	N0407	15990	1	47	FILL PLUG ASSY	48271-062	----	1
16	IMPELLER SHAFT	38514-549	15010	1	48	NAME PLATE	38818-019	13990	1
17	ALLEN HD SET SCREW	GA*10-01S	15990	2	49	DRIVE SCREW	BM*04-03	17000	4
18	BEARING RETAINER	38322-521	26000	1					
19 *	OIL SEAL	25227-303	----	1		NOT SHOWN:			
20 *	BEARING SHIM SET	48261-009	----	1		G-R DECAL	GR-03	----	1
21	SIGHT GAGE	26714-011	----	1		LUBE DECAL	38816-079	----	1
22	PIPE PLUG	P06	15079	1		INSTRUCTION TAG	38817-011	----	1
23	PIPE PLUG	P06	15079	1		INSTRUCTION TAG	38817-028	----	1
24 *	OIL SEAL	25227-311	----	1		SUCTION STICKER	6588AG	----	1
25	STUD	C0607	15991	8		PRIMING STICKER	6588AH	----	1
26	HEX NUTS	D06	15991	8		DISCHARGE STICKER	6588BJ	----	1
27 *	SEAL PLATE	3613	10010	1					
28 *	GASKET SET	3GC	20010	1		OPTIONAL:			
29 *	WEAR PLATE ASSY	2634B	15990	1		STRAINER	2362	24001	1
30	WASHER	3118	15990	1		2" STRAINER	26841-025	----	1
31	T-TYPE LOCK WASHER	AK06	15991	1		STREET ELBOW	RS32	11999	1
32	HEX HD CAP SCREW	B0603	15991	1		CASING HTR ASSY 120V	47811-046	----	1
						CASING HTR ASSY 240V	47811-047	----	1

* INDICATES PARTS RECOMMENDED FOR STOCK